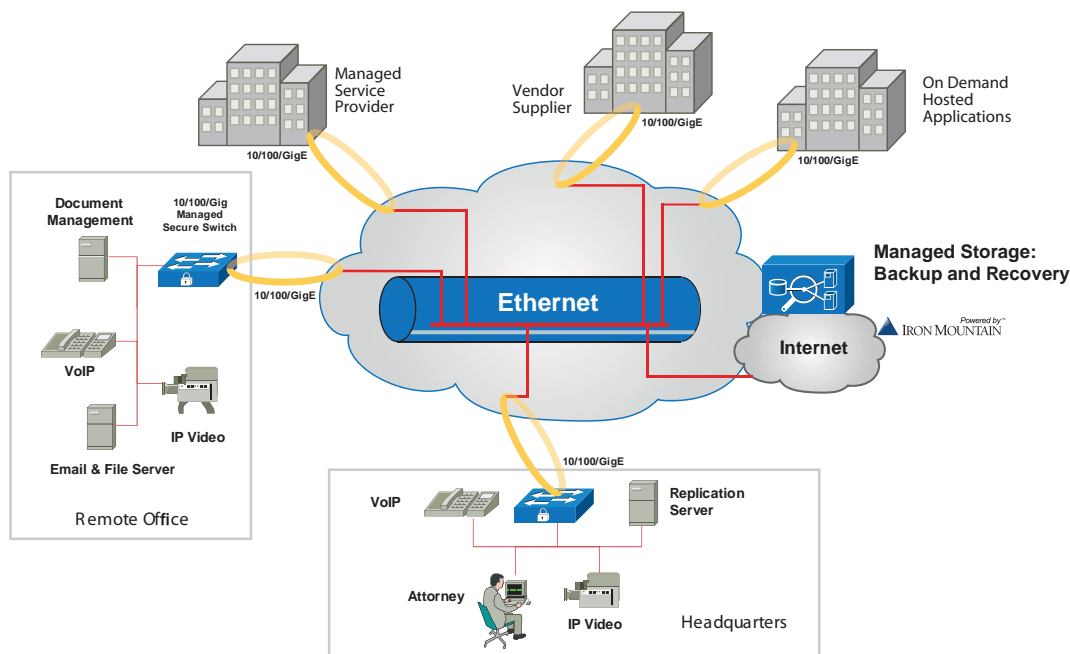


# Managed Ethernet Services



Metro Optical	Network Infrastructure
Core Network Technologies	Globally-deployed BGP-VPLS (K. Kompella) mesh between 18 primary POPs
Edge Network Technologies	Native Ethernet (IEEE 802.3) or Ethernet II
Reconvergence Technologies	Subsecond failover with multi-homed VPLS (MPLS) in network core and EAPS on metro
WAN Topologies Supported	Point-to-Point; Point-to-Multipoint; Multipoint-to-Multipoint (Full or partial Mesh)
MEF Service Types Supported	E-LINE; E-LAN; EPL; EVPL
Physical Network Media Supported	Fiber; Copper; Carrier Ethernet NNI

Metro Optical	Ethernet Services
Port Size Support	10M bps; 100M bps; 1G bps; 10G bps
Data Rate Support	1M bps to 1Gbps in 1 Mbps increments
Physical Presentation	10BaseT, 100BaseT, 1000BaseT over copper, single-mode fiber, multi-mode fiber with RJ45, SC, LC connectors
Logical Presentation	Transparent Layer 2 802.1Q VLANs, including "Q-in-Q" VLAN tag stacking
Data Schemes Protocols Supported	Jumbo Frames, VLAN-specific ACLs, Multicast distribution, IP, IPX, AppleTalk, DECnet, RIP, OSPF, BGP, IS-IS, MPLS, VPLS, 802.3 Ethernet, 802.1Q, 802.1P, Class of Service
Service Level Agreement Metrics	100% Availability; 99.9% Packet Delivery; 5 ms Latency in the Metro; 250 microseconds of Jitter; Installation and MTTR